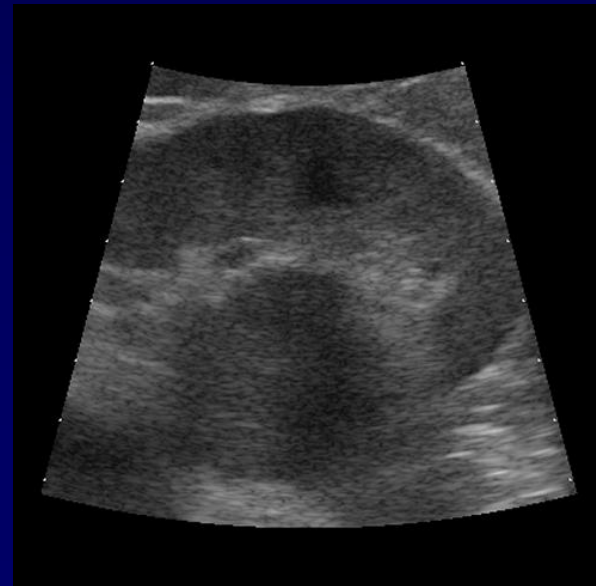
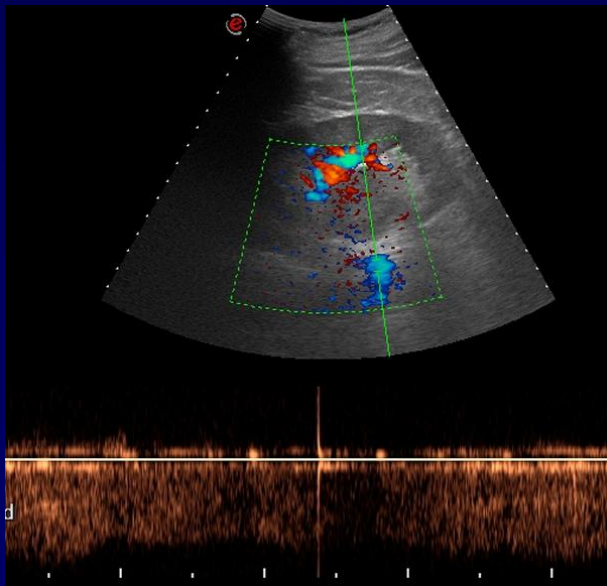




A LACOUT

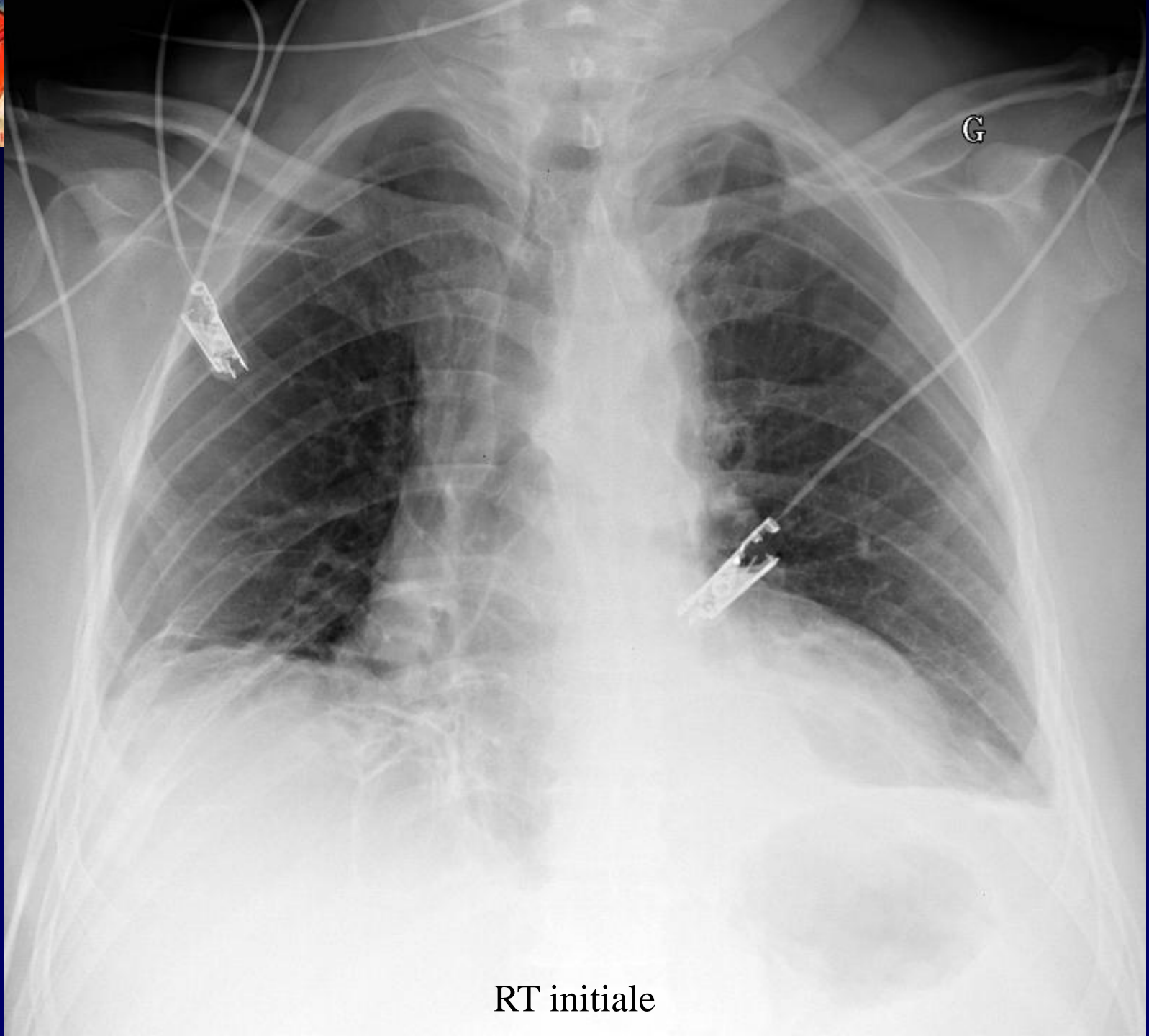
Patient de 61 ans

Post-opératoire d'une néphrectomie gauche pour cancer





RT initiale



RT initiale



Diagnostic ?

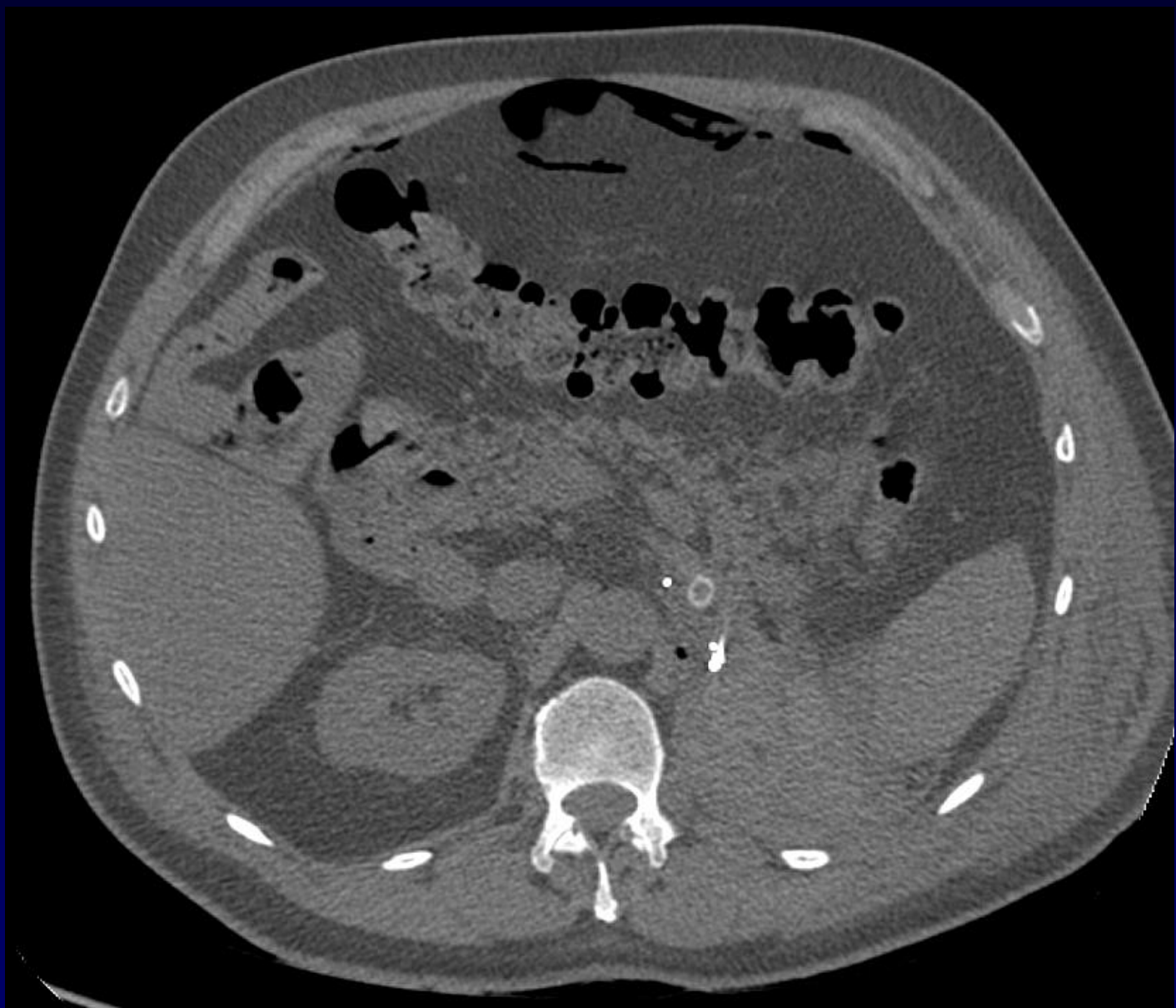


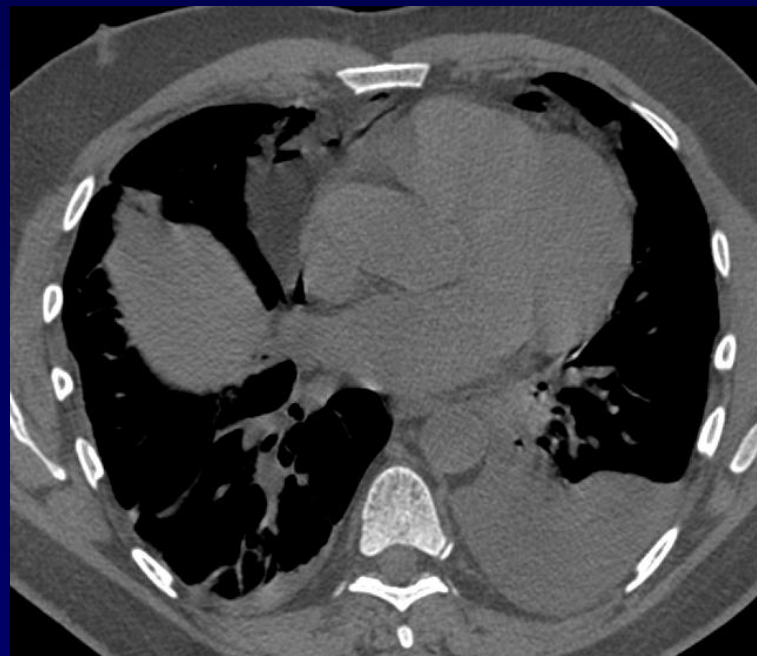
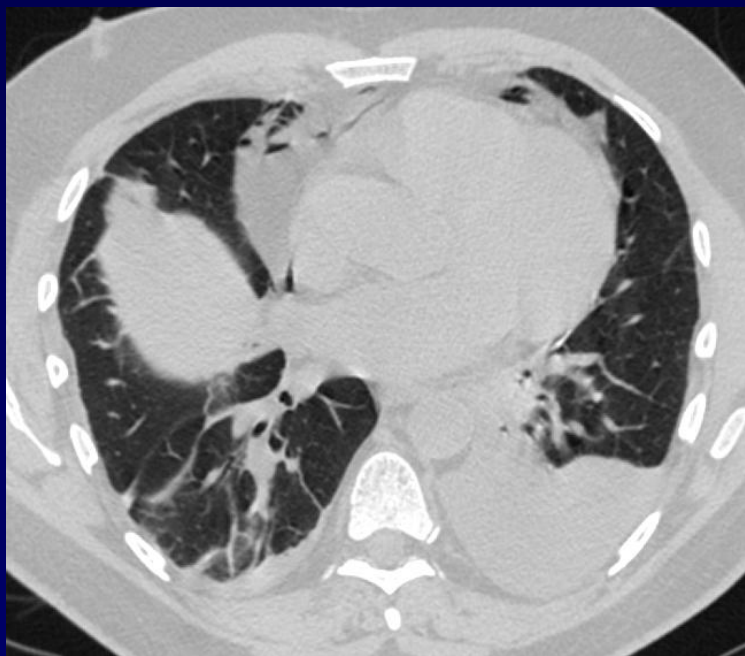
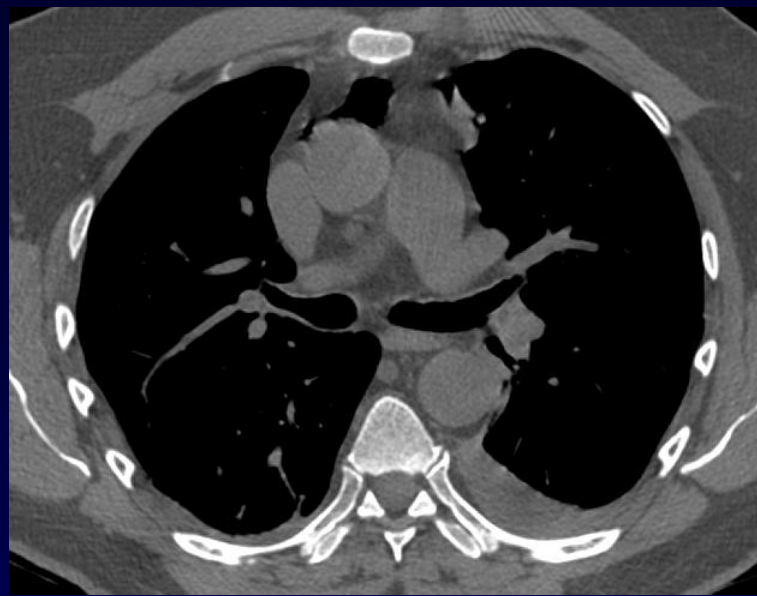
Diagnostic

Pneumopéritoine – médiastin post-opératoire

L'air remonte dans le médiastin antérieur par une déhiscence diaphragmatique,

Par la fente de Larrey ?



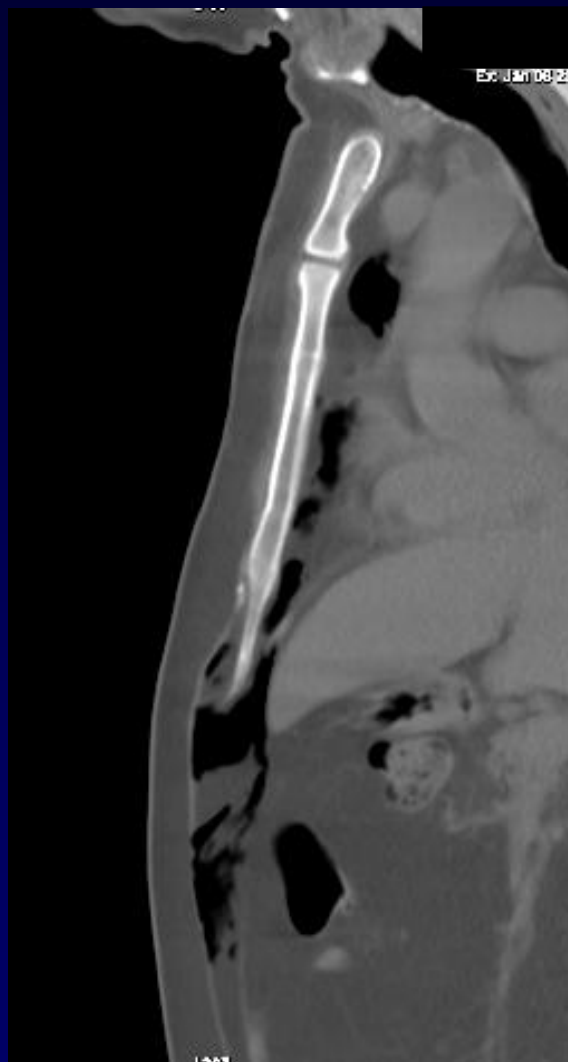




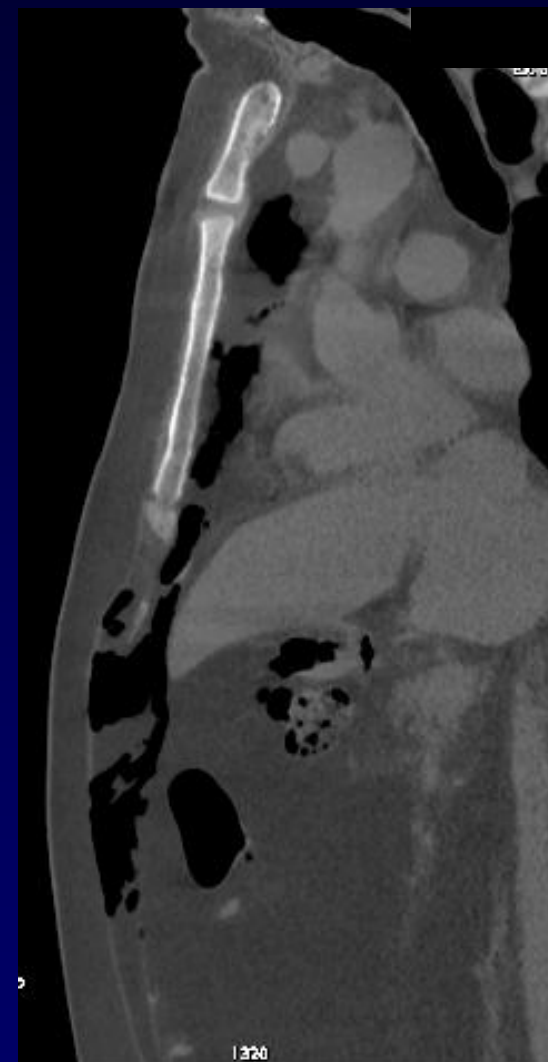
Sagittal



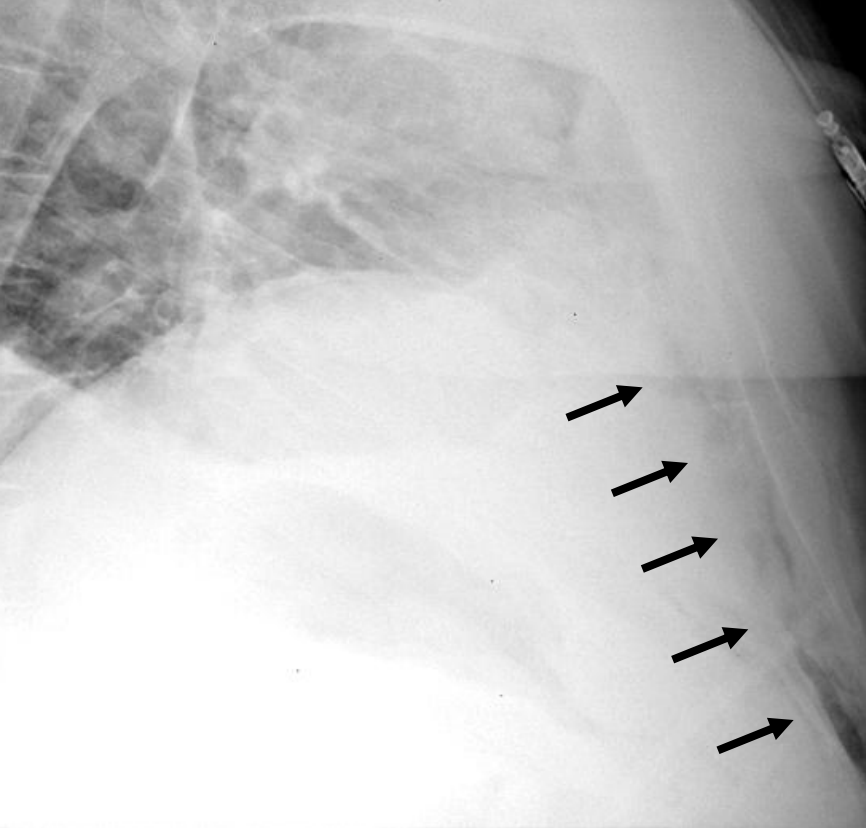
Fin



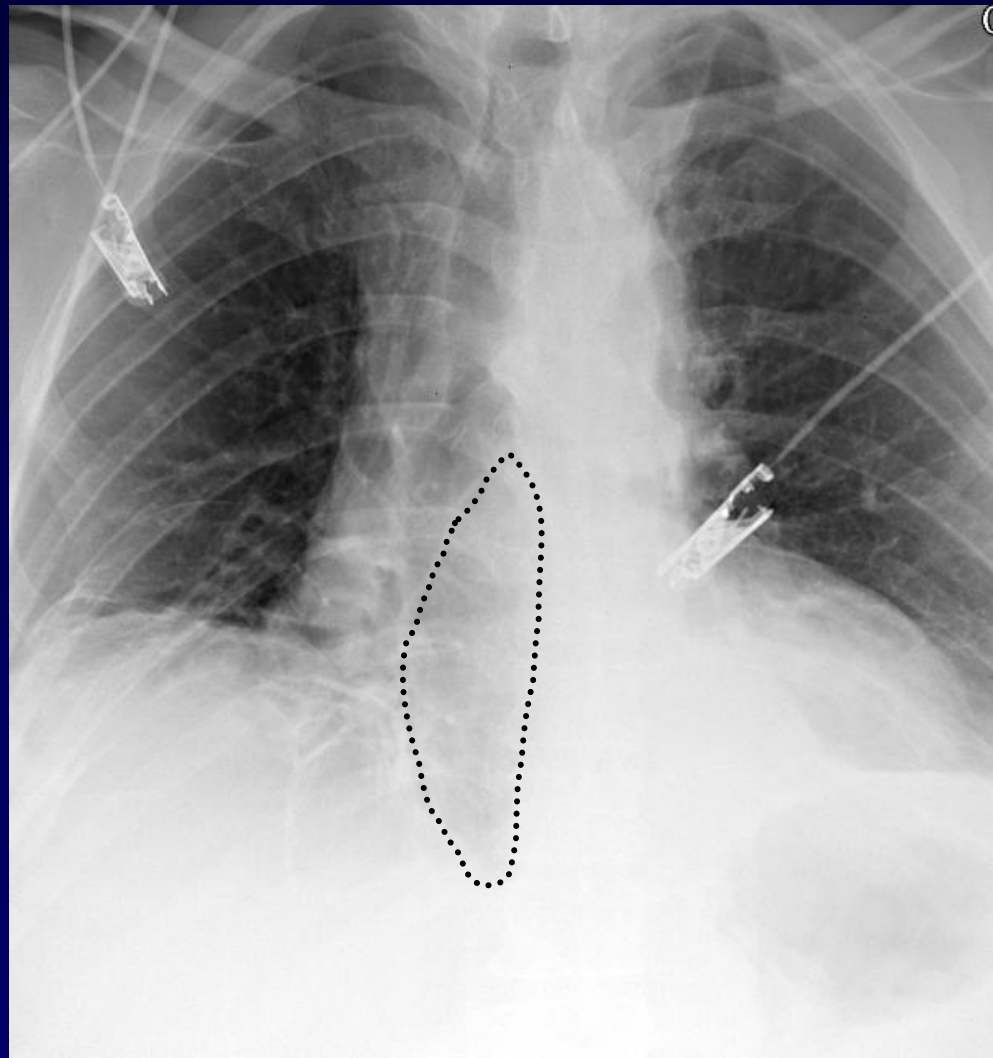
Epais



minimip



Air dans le médiastin





RT initiale



RT à J8